

EXERCISE KEY

CHRIS MATTOON

DRUM SET

BASS SNARE HIHAT CRASH

FLOOR TOM MEDIUM TOM SMALL TOM RIDE

CONTROL

CLEAN, FAST SINGLE STROKE ROLLS

CHRIS MATTOON

DRUM SET

(1)

pp ff pp

(2)

^p R L R L ETC. L R L R ETC.

(3)

^p pp ff

(4)

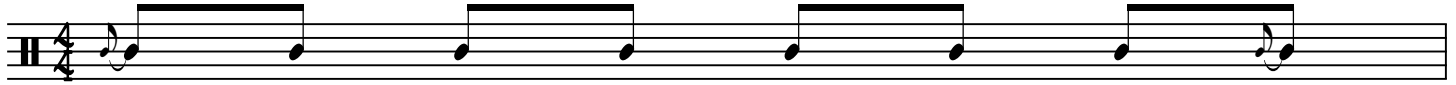
⁷ R R R R L L L L R R R R L L L L

READING AHEAD

GEOMETRIC APPROACH TO KNOWING WHAT'S NEXT

CHRIS MATTOON

DRUM SET



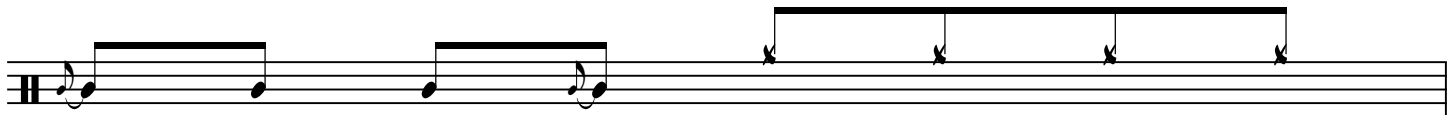
2



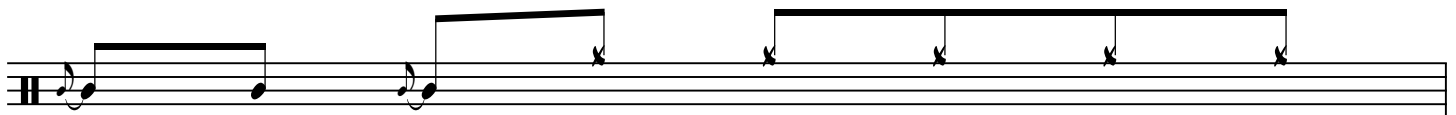
3



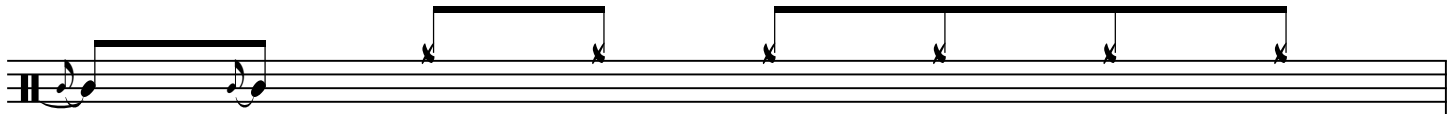
4



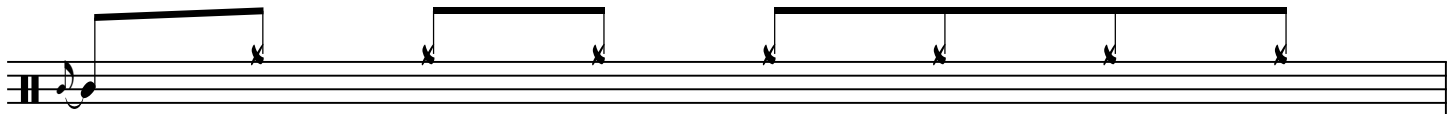
5



6



7



8

USING THE CRASH CYMBAL

CHRIS MATTOON

DRUM SET

The image displays six staves of drum notation for a drum set. Each staff begins with a double bar line and a 'C' in a circle, indicating common time. The notation consists of rhythmic patterns on a five-line staff, with 'x' marks above the lines representing hits. The first staff is labeled 'DRUM SET' and includes a 'C' in a circle. The subsequent staves are numbered 5, 9, 13, 17, and 21. The notation shows a consistent pattern of eighth notes with 'x' marks above them, and a crash cymbal (represented by a star) is used at the end of each measure in the later staves. The notation is organized into measures, with some measures containing a percentage sign (%).

© FEBRUARY 13, 2010

[HTTP://WWW.CHRISMATTOON.COM](http://www.chrismattoon.com)

PRACTICING TOM FILLS

CHRIS MATTOON

DRUM SET

1 2 3 4

5 6 7 8

9 10 11 12

13 14 15 16

17 18 19 20

21 22 23 24

© FEBRUARY 13, 2010

[HTTP://WWW.CHRISMATTOON.COM](http://www.chrismattoon.com)

CHANGING RIDE PATTERNS

...THE BEAT STAYS THE SAME...

CHRIS MATTOON

DRUM SET

1

5

9

13

17

21

© FEBRUARY 23, 2010

[HTTP://WWW.CHRISMATTOON.COM](http://www.chrismattoon.com)

CONSIDERING NATURAL ACCENTS

CHRIS MATTOON

DRUM SET

Drum set notation for 'Considering Natural Accents' by Chris Mattoon. The score is written in 4/4 time and consists of eight staves, each representing a different drum. The notation includes various rhythmic patterns, including eighth and sixteenth notes, rests, and accents. The first staff is labeled 'DRUM SET' and starts with a double bar line. The subsequent staves are numbered 3, 5, 7, 9, 11, 13, and 15, indicating the measure number. The notation uses standard drum set symbols: 'x' for cymbals, 'o' for snare, and '□' for bass drum. Accents are indicated by a small triangle above the note. The piece concludes with a double bar line and repeat dots.

© MARCH 01, 2010

[HTTP://WWW.CHRISMATTOON.COM](http://www.chrismattoon.com)